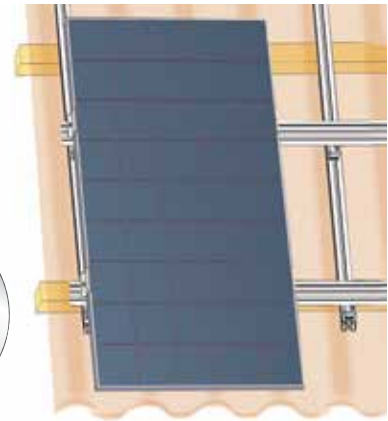


GridNorm

The standard cross rail system

- can be combined with all Schletter system components
- is made up of affordable standard rails
- flexible mounting



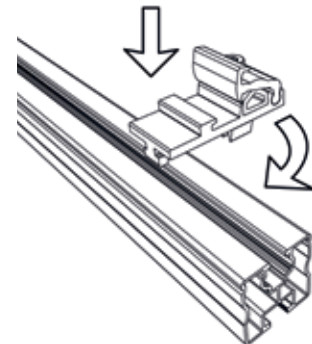
Description

For all normal application cases we still recommend the Schletter standard system, the unapproachably simple, flexible and quick mounting of cross rails directly onto the substructure.

The GridNorm cross rail system is ideal if there are only unfavourable fastening point on a specific substructure and the position of the horizontal beams has to be better aligned to the substructure.

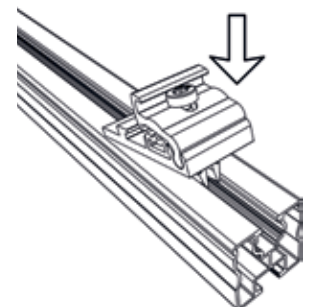
With GridNorm we give you the opportunity to install cross rail systems with the normal cross rail systems (Solo, Profi). Thus, you can install cross rail system made up of standard rails without any need for extra storage.

In addition, normal systems can be changed into cross rail systems.



Application examples

- Eternit or trapezoidal sheet metal roofs with horizontal battens
- Horizontal mounting on pantile roofs in case of unfavourable row partitions

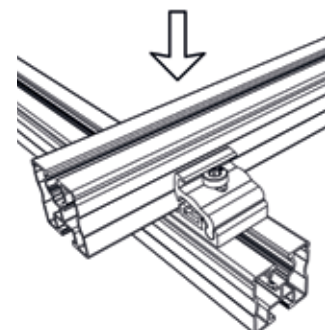


Application information

As a **lower profile**, usually a standard profile without cable duct is used (for example "Solo"). Due to the two screw ducts, it can be combined with all current substructure components of the Schletter series and also with different roof hook designs. As a **cross beam profile**, you can use profiles with (for example "Profi") or without cable duct (for example "Solo").

The **cross rail connector Rapid / KlickTop** is a price-efficient component that gives you the opportunity to install an extremely stable system that can be mounted conveniently from above.

Never use cross rail systems to reduce the number of roof hoofs or fastening spots. The number of roof hooks that is required per square meter of module surface area solely depends on the load-bearing capacity of the roof hooks and not on the rail system.



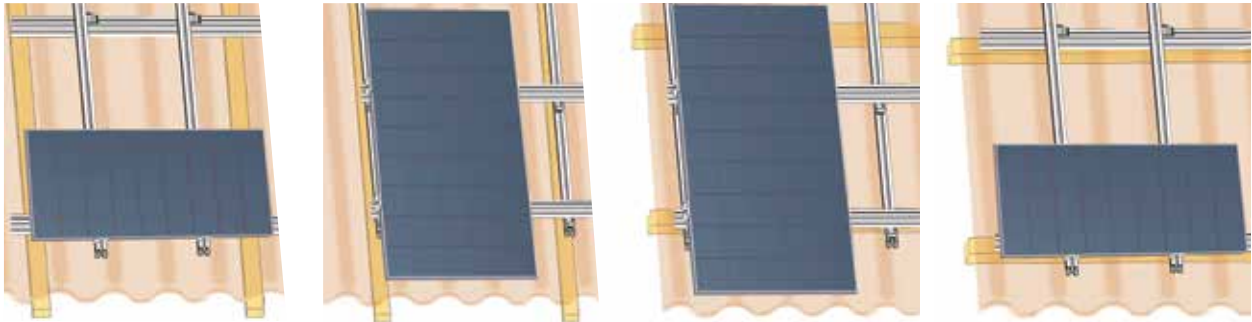
Mounting example with cross connector Rapid. Further information can be obtained in the respective mounting instruction (cross connector Rapid or cross connector KlickTop).

*The terms of guarantee can be referenced at www.schletter.de/AGB_en.

High span widths

In the case of the GridNorm system it is possible to use the mounting beams from the DN product series for the lower layer of rails to span bigger purlin spacings, for example (DN1 profile above, from eaves to ridge mounted on FixT connections and Profi05 as cross beam).

Mounting options



Technical data

Material	Profiled rails: Aluminium; Cross connector: Aluminium / quality steel 1.4301
Planning aid	Configuration and structural dimensioning with the AutoCalculator Easy and the Schletter Configurator.
Structural analysis	Structural analysis in accordance with current national standards (in Germany DIN EN 1991, EC1). Structural analysis annex for the dimensioning of the amount of required ballast. Always observe the structural analysis information!

Further information at: www.schletter.eu.